

Sigma Rolla Banner

SPECIFICATIONS

Graphic panel size
 Finished graphic panel size
 2300 x 800mm (includes 200mm bleed)
 Top 10mm of graphic is hidden by the hanger

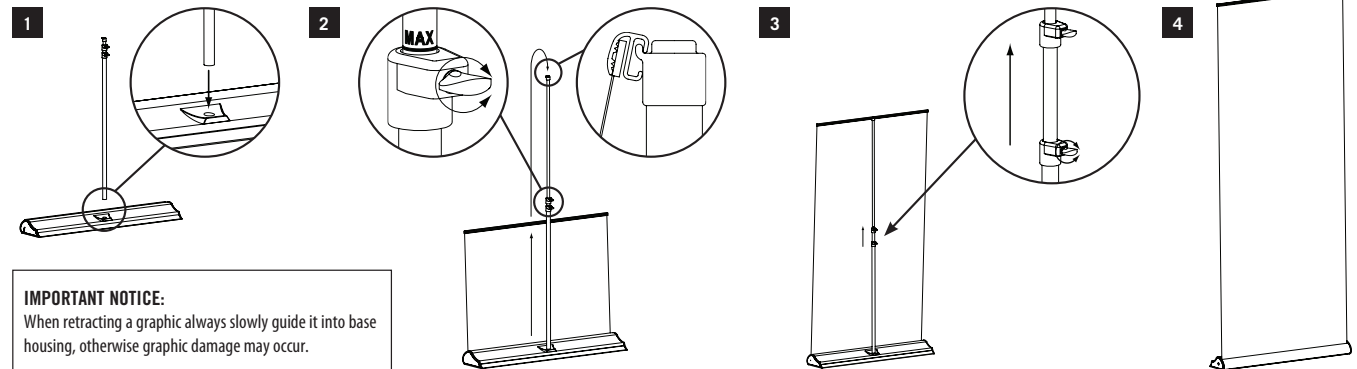
Visual graphic area
 2100 x 800mm

System sizes
 Boxed size
 900 (L) x 225 (W) x 105 (D)mm

Assembled size
 820 (W) x 180 (D) x 2175 (H)mm

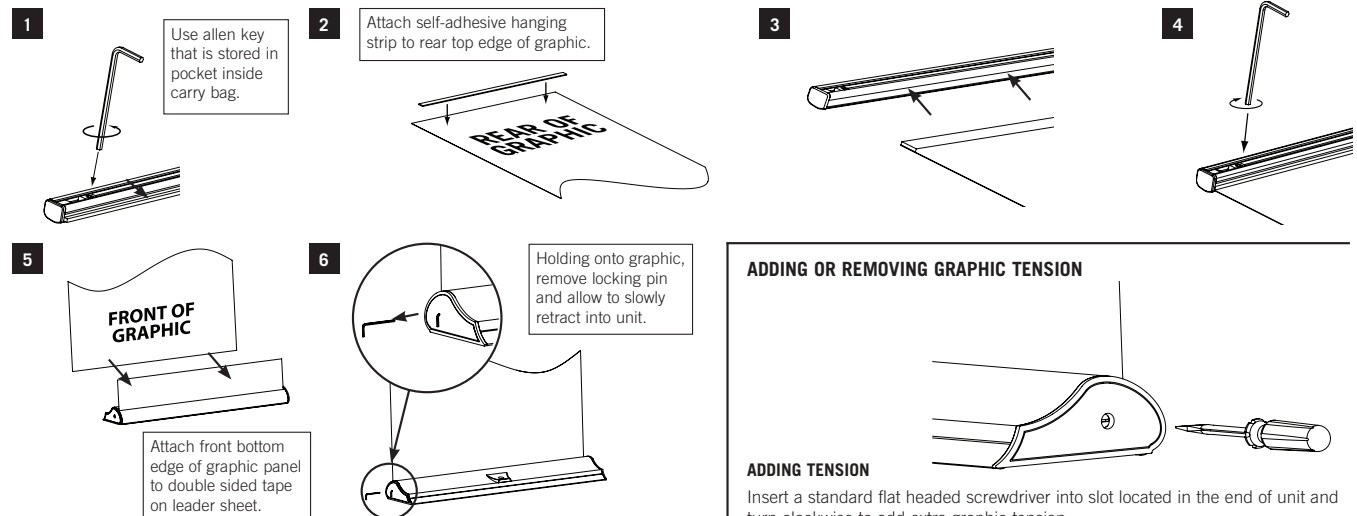
Boxed Weight 4.5kg

SIGMA - ASSEMBLY INSTRUCTIONS



IMPORTANT NOTICE:
 When retracting a graphic always slowly guide it into base housing, otherwise graphic damage may occur.

SIGMA - GRAPHIC ATTACHMENT



IMPORTANT NOTICE:
 To ensure a proper bond between graphic and double sided tape pressure must be applied. The adhesive should be allowed to cure for 24 hours before tension is applied.

ADDING OR REMOVING GRAPHIC TENSION

ADDING TENSION

Insert a standard flat headed screwdriver into slot located in the end of unit and turn clockwise to add extra graphic tension.

REMOVING TENSION

To un-tension graphic panel place a flat headed screwdriver into the slot and push to disengage ratchet. Hold in and turn anti-clockwise until tension in spring is released. To remove graphic panel carefully peel it off leader sheet. The graphic hanger can also be removed or a new hanger can be purchased.